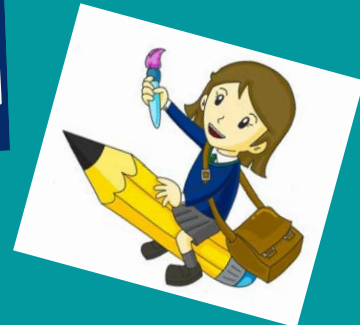




# LUNT'S HEATH

## News



**Friday 19th May 2023**

**“its has been the turn of our fantastic year 2 children to take part in the KS1 SATs this week. The staff have devised a brilliant way of the children becoming ‘Secret Agents’ for the week by giving them opportunities to work in the hall with Mrs Mansell to solve a variety of puzzles and questions to help them progress. The children have been happy and secure in their understanding, progressing without even realising it! The rest of the children across school have continued to show how brilliant they are with their own NTS tests also! Have a lovely weekend!”**

**Mr. D Paton, Heateacher.**

**THERE ARE NO AFTER SCHOOL CLUBS NEXT WEEK, OTHER THAN MONDAY, WHICH REPLACE THE MISSING BANK HOLIDAY SESSIONS.**

### **CLASS PHOTOGRAPHS - WEDNESDAY 24TH MAY**

On Wednesday 24th May, the photographer will be in school taking class photographs. The children should come to school on Wednesday wearing full school uniform (this can still be Summer uniform). The children should be wearing school shoes not trainers, hair accessories should be in the school colours and any earrings worn should be gold and silver studs and not other shapes or materials.

THE CHILDREN WILL NOT BE DOING PE ON THIS DAY,  
SO SHOULD NOT COME TO SCHOOL WEARING PE KIT ON WEDNESDAY.

### **HOUSE DAY - FRIDAY 26TH MAY**

Friday 26th May, will be our intra school house day. During this day the children will complete a number of activities in their house teams based on our school values of Ambition, Enterprise, Inner Resilience, Collaboration and Understanding. The children should come to school on this day wearing their school uniform but replacing their school shirt / polo shirt with a coloured T-shirt of their house colour:  
Appleton = Red / Ditton = Blue / Farnworth = Green / Upton = Yellow

### **CLASS 1L ASSEMBLY - FRIDAY 26TH MAY - 2.30PM**

On Friday 26th May, the children in Class 1L will be performing their class assembly for parents and carers. The assembly will start at 2.30pm in the school hall, parents do not require tickets or to book for this assembly.  
Doors will not open until 2.20pm so please do not arrive before this time.

### **LUNT'S HEATH'S GOT TALENT - THURSDAY 22ND JUNE - 6PM**

We are delighted to announce the return of Lunt's Heath's Got Talent. If your child has a talent: singing, comedy, dance or a performance of any kind that they would like to share they can audition for our school talent show.

Auditions will take place in the children's classes during the WB 12TH JUNE.

One winner from each class will be chosen to represent the class in the final which will take place on Thursday 22nd June at 6pm. Please see later in the newsletter for more information.

### **CAREERS' DAY - FRIDAY 30TH JUNE**

On Friday 30th June, we will be holding our annual Careers' Day. We are seeking the help and support of parents, grandparents and relatives; that are available to donate their time during this day to share information about their career with our children. Please see later in the newsletter for more information, see the letter attached to your email and contact Miss Fazackerley directly: [reina.fazackerley@luntsheath.halton.sch.uk](mailto:reina.fazackerley@luntsheath.halton.sch.uk) if you are available to help.

### **FORTHCOMING TRIPS - PLEASE MAKE SURE YOU HAVE COMPLETED THE EVOLVES**

CLASS 2L = TATTON HALL = 14TH JUNE

CLASS 2H = TATTON HALL = 15TH JUNE

EYFS BIRCHFIELD GARDENS = MONDAY 12TH JUNE = CLASS RL (AM) / CLASS RH (PM)

YEAR 2 INFANT MUSIC FESTIVAL = 28TH JUNE

YEAR 4 = THEATRE TRIP = 13TH JULY

### **NEW RECEPTION STARTERS - PARENTS' MEETING WEDNESDAY 24TH MAY 2023 - 5.30PM**

On Wednesday 24th May 2023 at 5.30pm, our school will be holding a meeting for the parents of our new Reception intake due to start school in September. During this meeting we will share information about the school, paperwork required as new starters and forthcoming events they are invited to. This will be an opportunity for questions to be asked and answered.

### **PTFA SUMMER DISCO**

Thursday 25th May = Key Stage 1 = 3.30pm - 5.00pm

Thursday 25th May = Year 5+6 = 5.30pm - 7.00pm

Friday 26th May = Year 3 + 4 = 3.30pm - 5.00pm

Key Stage 1 and Year 3/4 children should bring a change of clothes to school on this day to change into for the disco. Year 5/6 will arrive at the disco from home via the school office. Parents should collect their children from the KS2 PLAYGROUND. They must be collected by an adult and will not be allowed to walk home alone.




### **SPORTS DAY - DATE CHANGE = FRIDAY 23RD JUNE**

Unfortunately, due to timetable clashes we have had to move SPORTS DAY to Friday 23rd June (during Sports' Week) = KS2 am and KS1 pm. We apologise for any inconvenience caused. Our reserve day will remain the same.

# LUNT'S HEATH

## School Dinner Menu

Please find below the School Dinner Menu for the WB 15.5.23. Please remember to pay for your child's school dinner a week in advance using the school gateway system.

	Monday	Tuesday	Wednesday
Main	<b>MEET FREE MONDAYS</b>  <b>Tomato &amp; Vegetable Pasta Bake</b> Served with Garlic Bread  <b>Cheese &amp; Rice Flan</b> served with Herbie potatoes	<b>Bacon Brunch</b> Bacon, Hash Browns, Omelette  <b>Quorn Sausage Brunch</b> Quorn Sausage, Hash Browns, Omelette	<b>Traditional Turkey Roast Dinner</b> served with Roast/Mash Potatoes & Gravy <b>Roast Vegetarian Meatball Dinner</b> served with Roast/Mash Potatoes &  Gravy
Side	Peas & Sweetcorn, Salad Bar	Baked Beans, Salad Bar	Carrots, Broccoli, Salad Bar
Dessert	Frank's Welsh Ice Cream tub , Cheese & Crackers, Fresh Fruit	Carrot Cake slice, Yoghurt, Fresh Fruit	Melting Moment with a wedge of Fruit, Yoghurt, Fresh Fruit

Thursday	Friday
<b>DELI DAY</b> Selection of Deli Sandwiches, Wraps & Baguettes served with Warm pasta salad  <b>Filled Jacket Potato</b> served with a side salad	<b>Fillet Fish Fingers or Non-Fried Salmon Fillet</b> served with chips  <b>Margherita Pizza</b> served with chips
Salad Bar	Mushy Peas, Salad Bar
Vanilla sponge & custard, Cheese & Crackers, Fresh Fruit	Chocolate Orange cookie with Orange wedge, Yoghurt, Fresh Fruit

## EYFS Snacks

Following previous payments made last half term there will be no charge for the EYFS snack this half term and we will review payment requirements in the Summer 2nd Half term.

## LUNCHTIME STARS

RECEPTION = Ayda Griffin

YEAR 1 = Lucy Owen

YEAR 2 = Matthew Ellis

YEAR 3 = Sylvie McCann

YEAR 4 = James Escosio

YEAR 5 = Ruby Hart

YEAR 6 = Jayce Conning

## OTIS AWARD WINNERS

### Attendance winners

Attendance overall this academic year = 95.3%

Attendance Autumn Term = 94.5%

Attendance Spring Term = 95.6%

Attendance Summer Term, so far = 97.4%

Attendance this week = 97.7%

Attendance winners this week

EYFS / KS1 = 2L – Miss Spencer – 99.3%

KS2 = 4L – Miss Tabone – 99.3%



# STARS OF THE HALF TERM

## HEADTEACHER AWARD

EYFS / KS1 = Mason Dally

Giving 100% effort in everything she does!

KS2 = Saniya Vig

Putting 100% effort into all areas of school life!



### KEY STAGE 1

Class	Name of child	Reason for award
RL	<i>Arthur Doyle</i>	<i>Curriculum –For your great concentration and focus in our new Music and Movement sessions!</i>
	<i>Scarlett McIlrow</i>	<i>Understanding – for your amazing maths equations and challenging yourself!</i>
RH	<i>Oscar Bell</i> <i>Isabelle Fogg</i>	<i>Curriculum – showing great understanding of doubling</i> <i>Understanding –always treating others with kindness and respect</i>
1L	<i>Isabel Deller</i>	<i>Curriculum – For super concentration and perseverance in lessons while settling into your new class and new school.</i>
	<i>Thomas Latham</i>	<i>Understanding - For considering other people’s feelings and for being a good friend to so many.</i>
1H	<i>Felicity Young</i>	<i>Curriculum – For blowing my socks off all week with your fantastic effort towards your work!</i>
	<i>Quintus Eigelaar</i>	<i>Understanding – For demonstrating super understanding of digraphs and split digraphs in your reading and writing!</i>
Year 2	<i>For all of Year 2</i>	<i>Curriculum – For their incredible effort in their SATS quizzes this week working their socks off and trying their very best!</i> <i>Understanding – For showing a thorough understanding of the Y2 curriculum in Maths and English this week.</i>

### KEY STAGE 2

Class	Name of child	Reason for award
3L	<i>James Birchall</i>	<i>Curriculum – For a great improvement in his concentration levels and contributions.</i>
	<i>Jack Ryan</i>	<i>Understanding – Understanding the role high quality presentation plays in school.</i>
3H	<i>Luca Gilbert</i>	<i>Curriculum – For being a role model for our school on our recent trip to Chester Zoo.</i>
	<i>Owen Bell</i>	<i>Understanding – For showing his understanding in Geography, producing a wonderfully presented explanation on the features of a coastline.</i>
4L	<i>Daisy Steventon</i>	<i>Curriculum – For working so hard across all subjects and producing work to be very proud of!</i>
	<i>Ruhdvik Vadyala</i>	<i>Understanding – for using understanding skills in Art to create a beautiful Charles Rennie Mackintosh inspired rose piece!</i>
4H	<i>Alexa Haughton</i>	<i>Curriculum – For applying a growth mindset to all aspects of the curriculum.</i>
	<i>Jack Eshlin</i>	<i>Understanding – For understanding Charles Rennie Mackintosh and integrating the artists ideas into his final piece.</i>
5L	<i>Logan Lasikiewicz</i>	<i>Curriculum – For trying to find different methods to help him in his Maths.</i>
	<i>Hollie Rice</i>	<i>Understanding – For showing her great understanding of History this week</i>
5H	<i>Laycie O’Grady</i>	<i>Curriculum – For always listening well in lessons being a great role model for others.</i>
	<i>Jack Blade</i>	<i>Understanding – For asking lots of questions in Geography to help his understanding! Well done, Jack!</i>
6L	<i>Rachel Luk</i>	<i>Curriculum – for working hard and showing desire in everything she does.</i>
	<i>Oliver Patterson-Moran</i>	<i>Understanding – for always showing a keen interest in his lessons particularly his history lessons.</i>
6H	<i>Lily Parry</i>	<i>Curriculum - For writing and delivering a brilliant speech using a range of the oracy techniques we covered.</i>
	<i>Alexandra Barrow</i>	<i>Understanding - For showing a real understanding of why we are giving up our time to make a difference this week.</i>

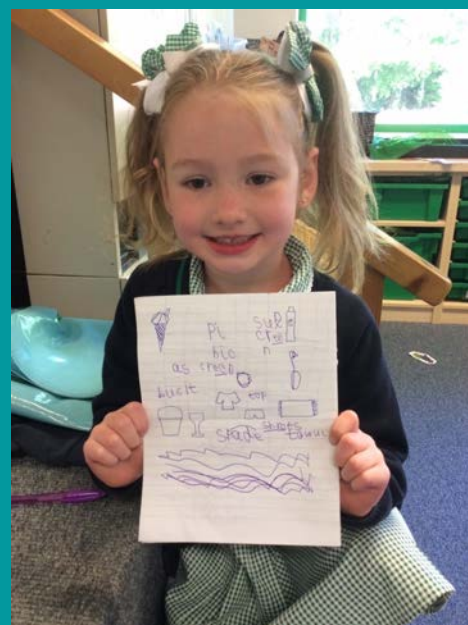


# EYFS Newsletter

We have enjoyed our time in the garden this week with the weather starting to improve! There has been lots to observe with some of our plants beginning to grow and the baby birds hatching in the nest under the shelter.

## ‘Do potatoes grow on trees?’

Our Big Question this week has been ‘Do potatoes grow on trees?’ We have enjoyed the story of ‘Oliver’s Fruit Salad’. We learnt the difference between fruit and vegetables and even used a world map to locate some of the places our favourite fruits come from!



## Mathematics

In Maths this week we have revisited our work on doubles and have extended to learning about halving. We are now starting to understand that halving is the inverse of doubling and our doubling facts really help us out!

## Drawing Club

In Drawing Club this week we have been enjoying the book ‘Farmer Duck’. The children have enjoyed drawing various characters and the setting of the story and it is wonderful to see them applying their phonic knowledge to describe what is happening in their drawings!

**Thank you to all the parents that donated replacement plants and resources to EYFS to replace those that had been damaged. The children enjoyed the chance to do some extra planting this week as you can see above. Have a great weekend!**



# LUNT'S HEATH'S

# GOT ★TALENT

**WE ARE DELIGHTED TO ANNOUNCE  
THE RETURN OF  
LUNT'S HEATH HAS GOT TALENT, 2023!**

**WE WELCOME ALL TALENTS, FROM SINGING, DANCE  
ROUTINES, PLAYING AN INSTRUMENT, COMEDY,  
MAGIC, SHOWING OFF FOOTBALL SKILLS OR ANYTHING  
THAT WILL WOW THE CLASS! THESE CAN BE SOLO,  
DUET OR  
GROUP ACTS.**

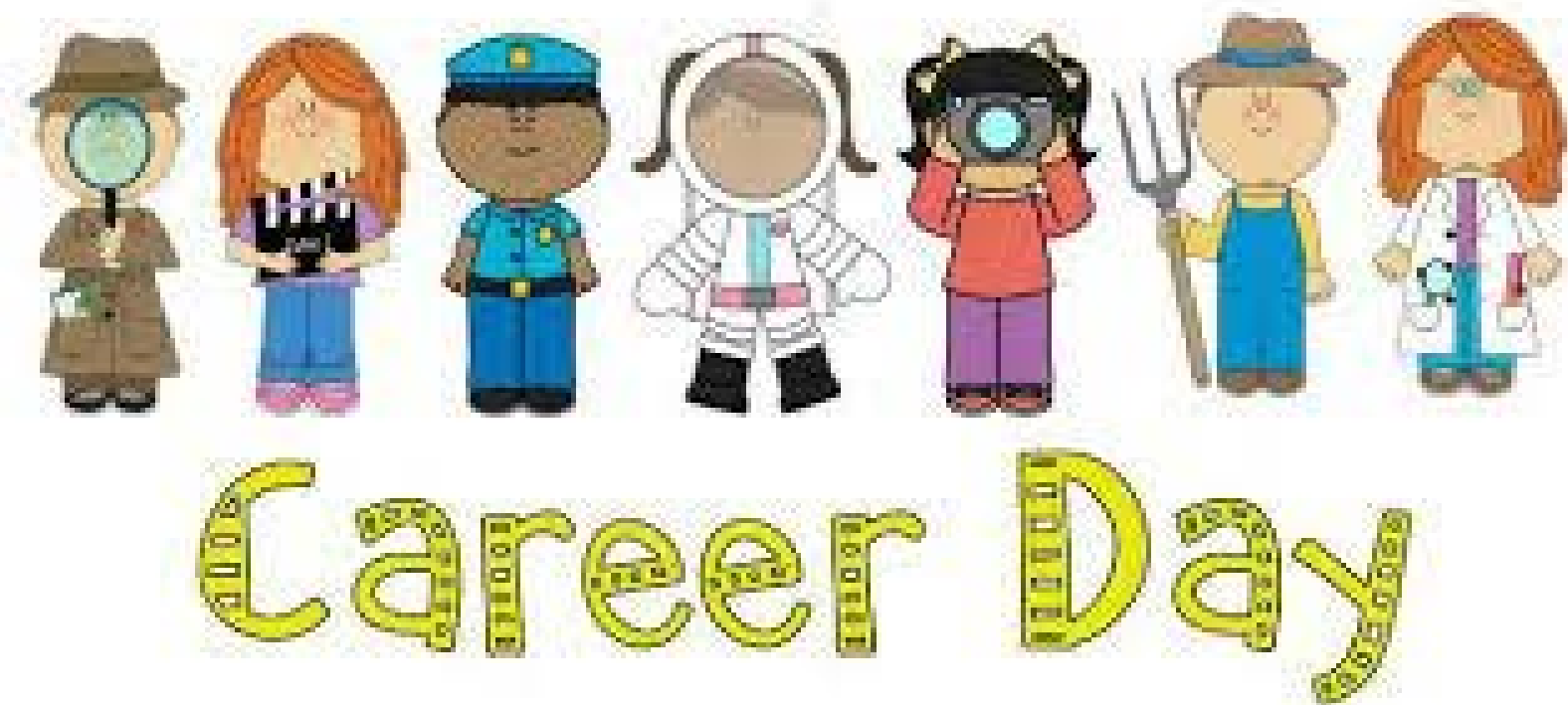
**AUDITIONS ARE TO TAKE PLACE IN CLASS DURING  
THE WEEK OF 12TH JUNE AND ONE CHILD PER CLASS  
WILL BE CHOSEN AS A FINALIST AT THE END OF THE  
WEEK. AUDITIONS SHOULD LAST A MAXIMUM OF 3  
MINUTES.**

**IF YOUR CHILD HAS BEEN CHOSEN FOR THE FINAL,  
THEY WILL PERFORM IN OUR LUNT'S HEATH HAS GOT  
TALENT SHOW ON THE EVENING OF THURSDAY 22ND  
JUNE FROM 6PM ONWARDS.**

**WE ARE VERY EXCITED AND ARE LOOKING FORWARD  
TO SEEING SOME AMAZING ACTS!**

**THURSDAY  
22ND  
JUNE  
6PM**





**ON FRIDAY 30TH JUNE 2023, LUNT'S HEATH PRIMARY SCHOOL WILL BE REPEATING ITS POPULAR "CAREERS DAY" AFTER THE SUCCESS OF LAST YEAR'S EVENT. WE HOPE THIS EXCITING OPPORTUNITY WILL PROVIDE OUR CHILDREN WITH INFORMATION ABOUT THE IMPORTANCE OF EDUCATION, PURSUING FURTHER EDUCATION AND ULTIMATELY THE STEPPING-STONES TO ACHIEVE THEIR DESIRED CAREERS. IN ADDITION, ALL CHILDREN WILL EXPERIENCE A VARIETY OF OCCUPATIONS THAT MAY BE UNFAMILIAR TO THEM AND GIVE THEM THE CHANCE TO EXPLORE EACH CAREER AND ASK QUESTIONS TO OUR COMPANY REPRESENTATIVES.**

**THE CHILDREN ARE BEING ASKED TO COME TO SCHOOL ON THIS DAY TO 'DRESS FOR SUCCESS' – ATTIRE LINKED TO THEIR FUTURE ASPIRATIONS (EXAMPLE: DOCTOR, LAWYER, NURSE, TEACHER, FIREMAN, POLICE, SCIENTIST, VET, FOOTBALL PLAYER ETC)! HOWEVER, WE CANNOT DO THIS WITHOUT YOU! WE APPRECIATE THAT OUR PARENTS ARE VALUABLE MEMBERS OF OUR SCHOOL COMMUNITY AND WE ENCOURAGE YOU TO BE INVOLVED WITH THIS HIGHLY BENEFICIAL EXPERIENCE TOO.**

**IF YOU, A FAMILY MEMBER, OR FRIEND IS INTERESTED IN VOLUNTEERING TO SPEAK ABOUT YOUR OWN PATHWAY TO YOUR DESIRED CAREER CHOICE, PLEASE EMAIL MISS FAZACKERLEY ([REINA.FAZACKERLEY@LUNTSHEATH.HALTON.SCH.UK](mailto:REINA.FAZACKERLEY@LUNTSHEATH.HALTON.SCH.UK)) PROVIDING THE BELOW INFORMATION OR ALTERNATIVELY COMPLETE THE FORM YOU HAVE BEEN EMAILED AND SEND IT TO SCHOOL WITH YOUR CHILD BY FRIDAY 26TH MAY 2023. VOLUNTEER SELECTION WILL BE ON A FIRST-COME BASIS. BRINGING STRESS BALLS, PENCILS, OR OTHER WORK-RELATED FREEBIES FOR PUPILS WILL KEEP CHILDREN ENGAGED. IF YOU HAVE ANY QUESTIONS, PLEASE FEEL FREE TO CONTACT MISS FAZACKERLEY.**

**WITH YOUR CONTINUED SUPPORT,  
WE LOOK FORWARD TO THIS MEMORABLE EVENT!**

**We Need Your Help**



**FRIDAY 30TH JUNE**





# NEXT WEEK

## LOCAL AND COMMUNITY HISTORY WEEK ACTIVITIES FOR CHILDREN



### LOCAL AND COMMUNITY HISTORY MONTH MAY 2023

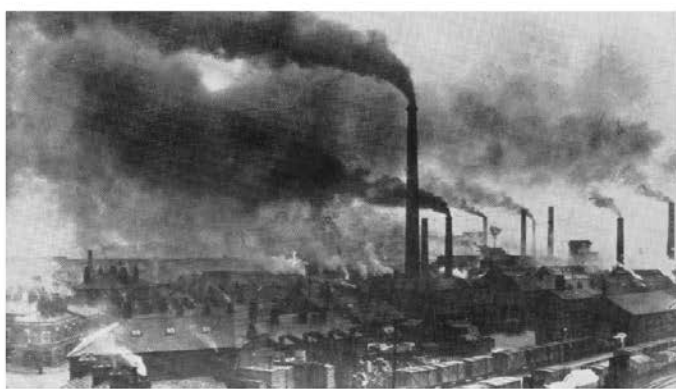
#### May is Local and Community History Month!

The aim of the month is to increase awareness of local history, promote history in general to the local community and encourage all members of the community to participate.

We would like pupils from Lunt's Heath Primary School to get involved in Local and Community History Month during the week of Monday 22<sup>nd</sup> May. Below, we have listed a variety of activities that pupils can complete and share with their class to promote history in the local area.

- Find 10 interesting historical facts about your local area.
- Interview a relative about the local area and find out how it has changed over the years.
- Research an historical individual from your local area. Who were/are they? When did they live and what are they famous for?
- Find some photographs of your local area from the past. How have things changed and why? Can you match them to recent photos of the local area?
- A House through Time - find out about the history of your house. When was it built and who by? Who else has lived there? What did they do? If your house is a new build, what was there before it?
- Visit the library and conduct your own line of enquiry such as 'How has the High Street of Widnes changed and why?'. Share your findings with peers.

If you would like to share any of your work or findings with school please email Miss Huddleston: [rebecca.huddleston@luntsheath.halton.sch.uk](mailto:rebecca.huddleston@luntsheath.halton.sch.uk)





# NEXT WEEK

## LOCAL AND COMMUNITY HISTORY WEEK

**As it is Local and Community History Week in school next week, Miss Huddlestone has created the below suggestions for activities that the children can complete to engage in their local area.**

### History of Farnworth and Village Walk

1000 years ago, north of the River Mersey was predominately marsh and waste land, however high ground above the water level was seized for settlement. Two miles north of the river, the village of Farnworth and its neighbouring villages were created. The name Farnworth means fern-farm from the Anglo-Saxon 'fearn' (fern or brake).

By the middle of the 19th Century, Farnworth was established as a small industrial town-ship producing sail-cloth and canvas on a large scale. Other associated industries included rope making, cloth dying and linseed oil production.

Attached is a map of Farnworth with locations of significant historical properties around the village. Can you go on a walk around Farnworth Village and find the places? If you complete this historical walk, please take some pictures and send them to Miss Huddlestone ([rebecca.huddlestone@luntsheath.halton.sch.uk](mailto:rebecca.huddlestone@luntsheath.halton.sch.uk)) or bring your pictures into class.

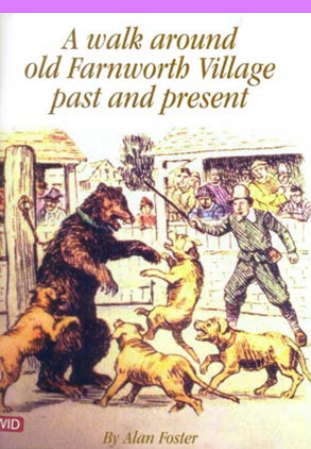




# LOCAL AND COMMUNITY HISTORY WEEK

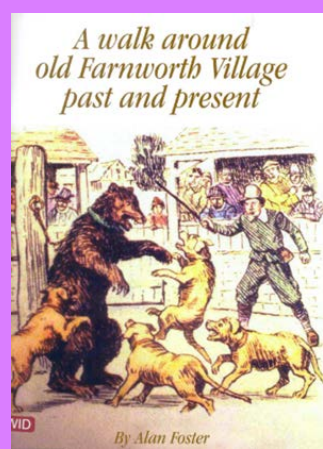
## History of Farnworth and Village Walk

1. 15 and 17 Derby Road – Originally one of the many taverns in the district and was named ‘Central Inn’.
2. 23 Derby Road was Intermediate Grammar School
3. 33 Derby Road was Miss Sutcliffe’s Preparatory School
4. The Hollies (23 Derby Road)– Grade 2-listed building. Built in an early Georgian style was completed around 1840. Most famous occupant was Ludwig Mont.
5. 61 Derby Road, was a Victorian Terrace.
6. 63 and 65 Derby Road, “Castle View”. Complete in 1840 it was first named ‘Sea View’ and then ‘Castle View’ because at its founding it had uninterrupted views of both the River Mersey and Halton Castle.
7. Saffron Restaurant was Co-operative Store AD 1906.
8. The Griffin Pub was school for the Poor Working Children
9. 9 Farnworth Street was old sailcloth warehouse.
10. Back of Scout Hut was Sea View Inn Bowling Green
11. New flats – formerly Mr Jones’ Post Office.
12. 63 Farnworth Street – The Beeches
13. 70 Farnworth Street was old Joiner’s Arms
14. 55, 57 and 59 Farnworth Street – “Kitchener’ Villas”.
15. Russell Court Buildings – was the site of Victorian Pilot School
16. 75 Farnworth Street – Old Slip Inn
17. 79 and 81 Farnworth Street were Bridges’ Bakery
18. 98, 98A and 96 Farnworth Street – was site of ‘George and Dragon Inn’
19. View looking down Pit Lane from Ring-O-Bells.
20. View looking at Coroners Lane end – was Church House, 1st Post Office
21. View at top of Farnworth Street – first Co-op Building in 1882 and Commercial Inn.
22. East view of top of Farnworth School – Old Farnworth Grammar School
23. Bridewell – AD 1100, restored in 2000
24. Top of Marsh Hall Pad – was old Sunday School (1831)
25. ‘Bear Hall Cottage’ now new properties between Church and Old Sunday School
26. Marsh Hall was situated in Derby Road opposite Marsh Hall Road
27. 124 and 126 Derby Road – built as a sailcloth factory
28. 104 to 110 Derby Road – early Georgian Terraced Houses



Map taken from

‘A walk around old Farnworth Village past and present’ by Alan Foster.





# THIS WEEK

## YEAR 6 - LEADERSHIP

Year 6 leadership the children had fun working together build the tallest tower with only spaghetti, tape and string to balance a marshmallow on top. They then collaborated to transport items across the playground to solve a range of problems.





# THIS WEEK

## YEAR 6 - WE WILL RECYCLE

During their recycling project this week, Year 6 have worked extremely hard on: showing great leadership, why it is important to reuse and repairs clothing and giving practical uses for old materials. They have worked incredible hard and we thank all of our parents and children that donated clothing and came along to our swap shop. So far we have raised £252.00 for charity.





# THIS WEEK

## YEAR 6 - SCHOOL COUNCIL NETWORK

**Our Year 6 School Council Members visited Farnworth Primary School on Thursday to work together on a focussed project to improve their respective schools. They look forward to collaborating more in the future.**



School council meeting at Farnworth Primary School

18.05.2023

### Future Ideas:

- \* therapy dog
- \* fish tank
- \* school council books
- \* own clothes for birthdays
- \* outside lessons
- \* forrest school taps (see images)
- \* forest school outdoor cameras for wildlife
- \* pre-pay snack time toast and toast monitors
- \* spare change bottles (see images)
- \* school council display board
- \* scented air spray - welcoming as you walk into the building
- \* sensory garden: - gated pond (see images)
  - herbs/lavender
  - wind chime



We have been invited to a future forest school experience with Farnworth Primary School

Next school meeting to be held at Fairfield Primary School. Maybe we could host one in the near future.



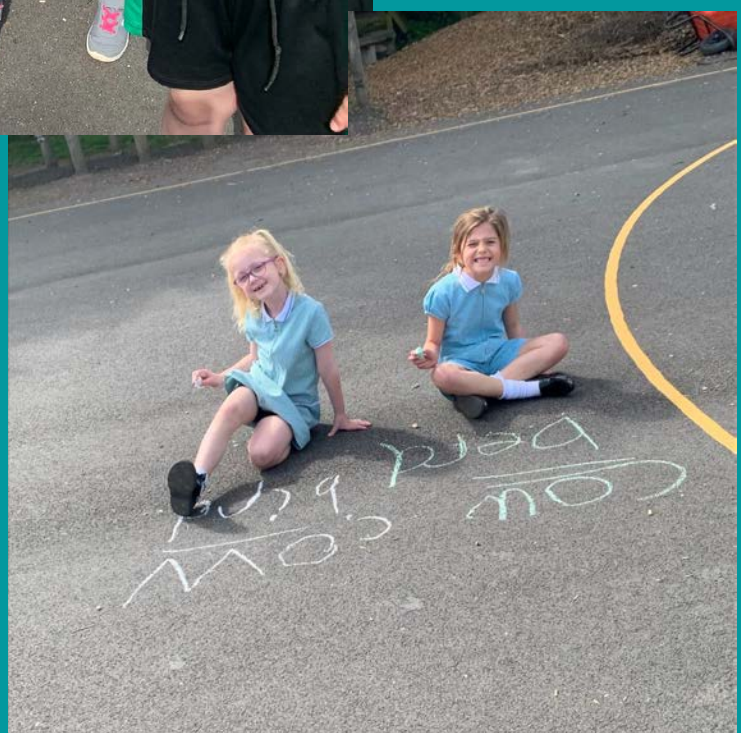
PIC•COLLAGE



# THIS WEEK

## PHONICS AND READING CLUB

The children in phonics and reading club enjoyed our sound hunt and writing words with different sounds in using chalk in the sunshine.





# THIS WEEK

## DOJO SHOP

**We had our first winners of a McDonald's lunch this week. These children had decided to save up their Dojo points to cash these in for this reward. Well Done!**



## Y5/6 WIDNES CRICKET TOURNAMENT

**On Wednesday, our Year 5/6 cricket team didn't only win the competition but also broke many records. Winning 6 out of 6 games; they scored an incredible 558 runs which included 82 boundaries! This added to taking 37 wickets shot them to victory as one of the most dominant sides we've seen. Next stop is the Cheshire finals in early July!**





# THIS WEEK

## YEAR 4 -

### TAG RUGBY MATCH

A number of children in Year 4 participated in a rugby match against Moorfield on Wednesday this week. It was a great opportunity for them to develop their tag rugby skills further working as a team. They had a great time and can't wait for the next match.







# DISCO

## School Discos

We hope the children are excited for the discos next week!

There's still time for last minute tickets if you haven't paid for your child to attend.

£1 is payable on the school gateway and this includes a snack and drink (carton drink or water, biscuits, crisps).

If your child is attending and you have any dietary concerns that school is not already aware of, please let the class teacher know.

If you have no payment option showing, you may have already paid!

Check your previous payment and if there is no record please drop in to the school office and they will help you.

Thursday 25th May = Key Stage 1 (Reception, Year 1, Year 2) -  
3.30pm – 5.00pm  
= Year 5 and 6 - 5.30pm – 7.00pm

Friday 26th May = Year 3 and 4 – 3.30pm – 5.00pm

We hope they have a fabulous time dancing and having fun with their friends to mark the end of term.

THURSDAY 25TH MAY  
KS1 = 3.30PM – 5.00PM

THURSDAY 25TH MAY  
YEAR 5+6 = 5.30PM – 7.00PM

FRIDAY 26TH MAY  
YEAR 3 + 4 = 3.30PM – 5.00PM





# LUNT'S HEATH PTFA SECRET PRESENT SHOP

16th June 2023

We'll be back with another present shop for your children to buy a gift for an important man in their life.

Gifts cost £2.50 and come wrapped so they can be kept secret!

Payable on the school gateway. One gift per child but if an additional gift is needed this can be requested and paid in cash to the office.

## Secret Present Shop

Our Secret Present Shop returns to school on the 16th June. We have a range of gifts for the children to choose from that they bring home wrapped so they can be kept secret. We have a number of generic gifts that can be purchased for any important man in their lives, so dads, step-dads, uncles, grandads, we've got them all covered.

Gifts will cost £2.50 and will be payable on the school gateway.

For our Mother's Day Shop this year we allowed multiple gifts to be purchased on the gateway, this didn't work well unfortunately! So

this time we ask that if you have circumstances where your child needs to purchase two gifts, please request a second gift in the office and pay £2.50 in cash.





## Registered Charity Application

We are currently working on our application to become a Registered Charity. This has taken up lots of our time as we have been focussing our efforts on events and ensuring we have the relevant procedures and practices set up for becoming a Registered Charity.

As part of our registration we need to adopt a new Constitution. The Constitution is our governing document. We are therefore holding an Extraordinary General Meeting (EGM) on Monday 12th June

to formally vote on the adoption of this document.

As part of this meeting we will also be accepting nominations for Trustees and voting on these.

If you have any experience of volunteering for Registered Charities and feel you could help or would be interested in being a Trustee in the future, please get in touch at [luntsheathpta@yahoo.com](mailto:luntsheathpta@yahoo.com).

You are also welcome to attend the meeting on Monday 12th June.



**CHARITY COMMISSION**  
FOR ENGLAND AND WALES



## Friends of Lunt's Heath Primary School



### The New School Year

It may feel a little soon to be thinking about September, but we are. On the 20th September you will be able to drop in to school between 6pm and 7pm to find out more about what the PTA does and ask any questions or make suggestions. You'll be treated to hot drinks and cakes and you'll have the bonus of a break from the kids! If you can't attend but have family members who might like to find out more and how they could help, share the details with them and tell them to come along, we'd love to see them as we are open to all.

## Friends of Lunt's Heath Primary School

PARENTS AND FAMILIES OF  
LUNT'S HEATH STUDENTS NEW AND OLD  
ARE INVITED TO A

*Meet & Greet*

WITH

**LUNT'S HEATH  
PTFA**



PLEASE POP ALONG FOR  
TEA/COFFEE & NIBBLES TO  
MEET OUR PTFA AND FIND OUT  
WHAT WE'RE ALL ABOUT

DROP IN BETWEEN 6-7PM  
20TH SEPTEMBER 2023  
LUNT'S HEATH SCHOOL

EMAIL: [LUNTSHEATHPTA@YAHOO.COM](mailto:LUNTSHEATHPTA@YAHOO.COM) TWITTER: @LUNTSHEATHPTA  
FACEBOOK (GROUP): LUNTS HEATH PTA GROUP





# MULTIPLICATION CHAMPION



TOP CLASS = CLASS 2L  
TOP MATHEMATICIAN =  
ALBI MAGEE 4L

## Multiplication Challenge

Children in Year 4 need to complete a Multiplication Tables Check during the Summer 2<sup>nd</sup> Half Term.

Multiplication facts are needed in virtually all other areas of Mathematics therefore the more confidently children can recall these facts the easier they will find their Mathematics lessons as a barrier to learning is removed.

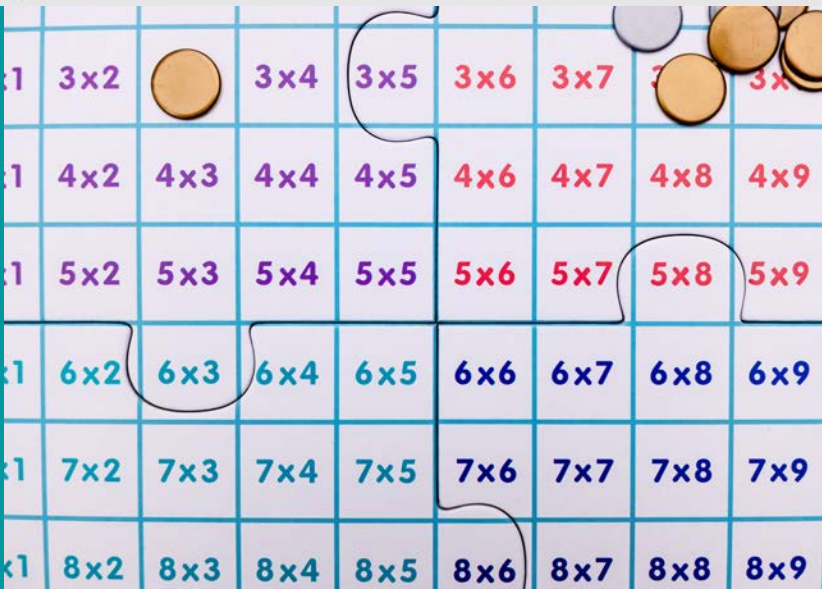
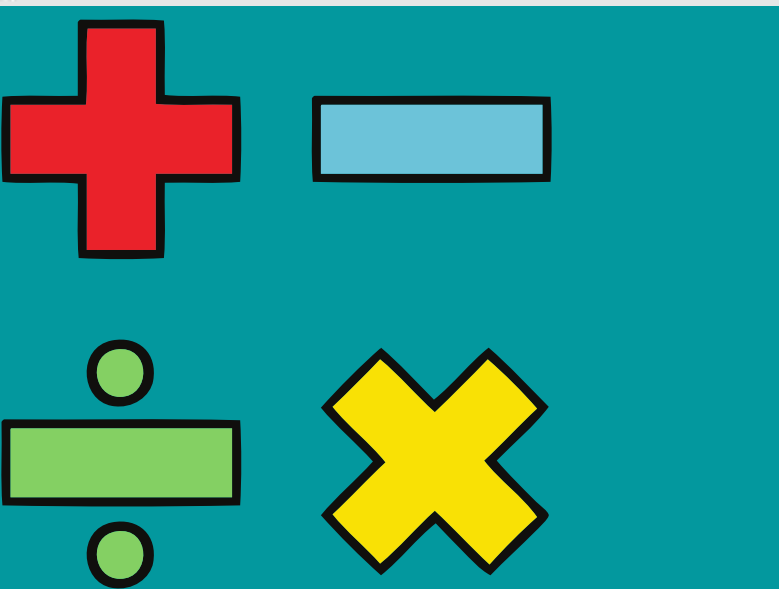
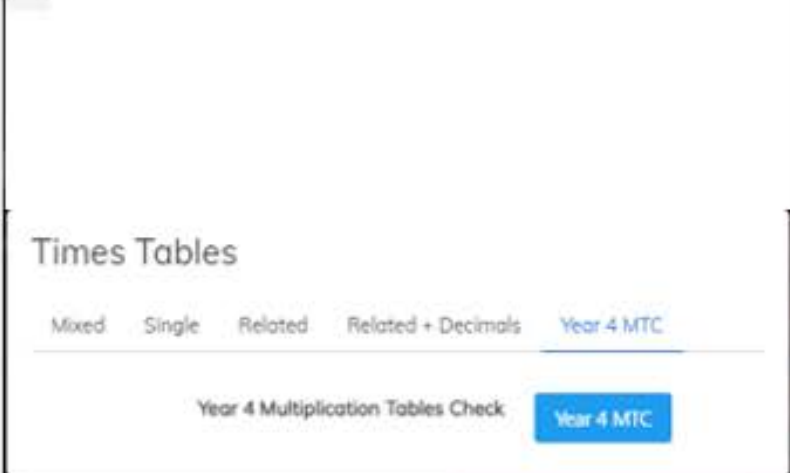
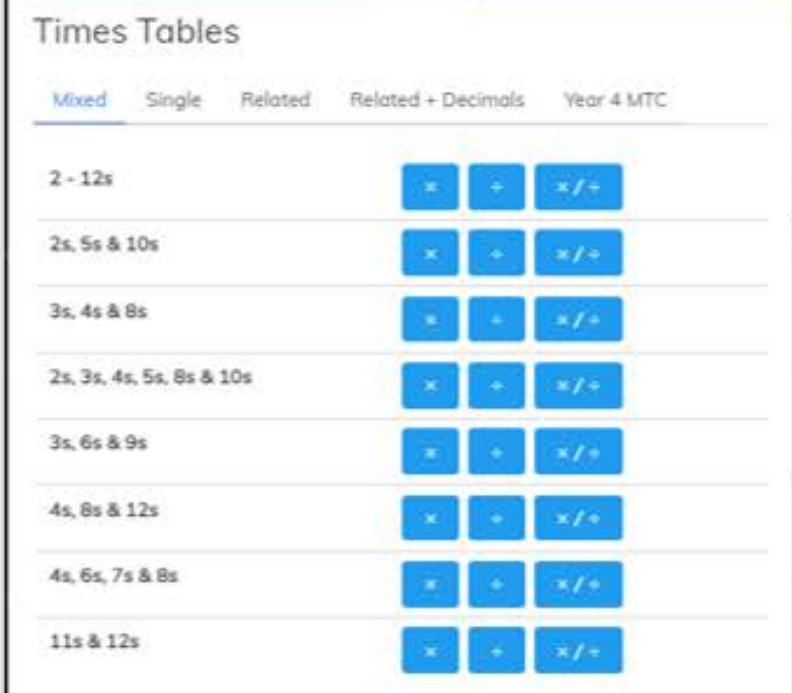
TO SUPPORT YEAR 4 IN THEIR QUEST TO RAPIDLY RECALL THEIR MULTIPLICATION FACTS WE WILL BE HOLDING A KS2 MULTIPLICATION CHALLENGE OVER THE NEXT THREE WEEKS.

PLEASE ENCOURAGE YOUR CHILD TO USE MATHS SHED ON A NIGHTLY BASIS TO PRACTICE THEIR MULTIPLICATION TABLES.

This can be found on Maths Shed. Click on Times Tables – your child can practice specific times tables that they do not know or attempt to improve their rapid recall by selecting Y4 MTC.

ON A FRIDAY WE WILL HAVE AN INDIVIDUAL WINNER FROM EACH CLASS FOR THE CHILD THAT HAS THE HIGHEST MATHS SHED SCORE AND A KS2 CLASS WINNER.

WE ARE SEARCHING FOR OUR KS2 MULTIPLICATION CHAMPION FOR KS2!





TOP CLASS = CLASS 3H  
TOP SPELLER =  
HOLLY PEACOCK 3H

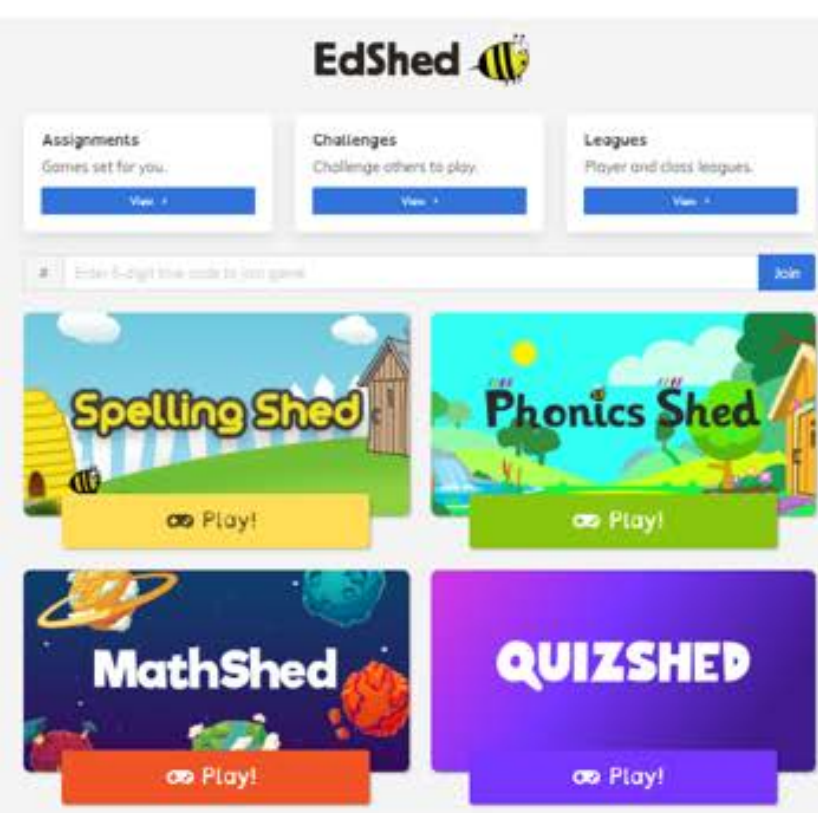
# Spelling and Phonics Shed

Just a reminder that the Lunt's Heath PTA have funded a subscription for every child to not only Maths Shed but the platform which also includes Spelling and Phonics Shed.

During lockdown we have found that the children's spelling ability was greatly impacted as it was difficult to teach and test spellings virtually.

Spelling shed allows the children to practice their spellings for their age phase in a fun and interactive way through games.

Encourage your child to log into their account, select Spelling Shed or Phonics Shed. Choose their age phase and then they can choose the game type and level of challenge.





# Diary DATES

## SUMMER 1ST HALF TERM

### SUMMER 1<sup>ST</sup> HALF TERM

**Monday 17<sup>th</sup> April – SCHOOL RE-OPENS STAFF AND PUPILS**

Tuesday 18<sup>th</sup> April – Class 3H Swimming 1.30pm – 3.30pm

Tuesday 18<sup>th</sup> April – Tuesday 11<sup>th</sup> July = Year 4 – Shakespeare Meet the Bard

Wednesday 19<sup>th</sup> April = EYFS Music and Movement Phonics

Wednesday 19<sup>th</sup> April = Y1 Music and Movement Numeracy

Wednesday 19<sup>th</sup> April = Reception and Y6 - Height and Weight Measure

Thursday 20<sup>th</sup> April = Year 5 Outdoor Learning

Thursday 20<sup>th</sup> April - School Nurse – Parent drop in = KS1 Lodge

Friday 21<sup>st</sup> April – Rock Kidz | (Children to dress in own ‘ROCK’ clothes.

Friday 21<sup>st</sup> April – End of year reports go out to parents. (Except 5H)

Monday 24<sup>th</sup> April – Year 1 - Great Fire of London Workshop

Tuesday 25<sup>th</sup> April – Class 3H Swimming 1.30pm-3.30pm

Tuesday 25<sup>th</sup> April – Year 4 – Meet the Bard Shakespeare Project.

Wednesday 26<sup>th</sup> April = EYFS Music and Movement Phonics

Wednesday 26<sup>th</sup> April = Y1 Music and Movement Numeracy

**Wednesday 26<sup>th</sup> April – KS1 Parent Meeting 5.30pm – KS1 SATS, Phonics Screening Check, Mathematics**

Thursday 27<sup>th</sup> April = Year 5 Outdoor Learning

Friday 28<sup>th</sup> April – Class 1H Assembly 2.15pm-3pm

**Monday 1<sup>st</sup> May – SCHOOL CLOSED – BANK HOLIDAY**

Tuesday 2<sup>nd</sup> May – EYFS Kenyon Hall Farm Trip

Tuesday 2<sup>nd</sup> May – Swimming Class 3H = 1.30-3.30pm

Tuesday 2<sup>nd</sup> May – Year 4 Shakespeare Meet the Bard

Wednesday 3<sup>rd</sup> May = EYFS Music and Movement Phonics

Wednesday 3<sup>rd</sup> May = Y1 Music and Movement Numeracy

**Thursday 4<sup>th</sup> May = POLLING DAY (SCHOOL REMAINS OPEN)**

Thursday 4<sup>th</sup> May = Year 5 Outdoor Learning

**Monday 8<sup>th</sup> May – SCHOOL CLOSED = KING CORONATION - BANK HOLIDAY**

**Tuesday 9<sup>th</sup> May - Friday 12<sup>th</sup> May = KS2 SATs WEEK**

Tuesday 9<sup>th</sup> May = Class 3H Swimming 1.30pm-3.30pm

Tuesday 9<sup>th</sup> May = Year 4 Meet the Bard- Shakespeare Workshop

Wednesday 10<sup>th</sup> May = EYFS Music and Movement Phonics

Wednesday 10<sup>th</sup> May = Y1 Music and Movement Numeracy

Thursday 9<sup>th</sup> May = Year 5 Outdoor Learning



# Diary DATES

## SUMMER 1ST HALF TERM CONTINUED...

**Monday 15<sup>th</sup> May – Friday 20<sup>th</sup> May = KS1 SATs WEEK**

Monday 15<sup>th</sup> May = Class 3H Chester Zoo Trip (Martin Mere Replacement)

Tuesday 16<sup>th</sup> May = Class 3H Swimming 1.30-3.30pm

Tuesday 16<sup>th</sup> May = Year 4 Meet the Bard – Shakespeare Workshop

Wednesday 17<sup>th</sup> May = EYFS Music and Movement Phonics

Wednesday 17<sup>th</sup> May = Y1 Music and Movement Numeracy

Thursday 18<sup>th</sup> May = 2pm School Nurse Drop in sessions for parents.

Thursday 18<sup>th</sup> May = Year 5 Outdoor Learning

Monday 22<sup>nd</sup> May = Local and Community History Week

Tuesday 23<sup>rd</sup> May = Class 3H Swimming 1.30-3.30pm

Tuesday 23<sup>rd</sup> May = Year 4 Meet the Bard = Shakespeare Workshop

Wednesday 24<sup>th</sup> May = EYFS Music and Movement Phonics

Wednesday 24<sup>th</sup> May = Y1 Music and Movement Numeracy

**Wednesday 24<sup>th</sup> May = School Photographs**

Wednesday 24<sup>th</sup> May = New EYFS Parents' Meeting 5.30pm

Thursday 25<sup>th</sup> May = Year 5 Outdoor Learning

Friday 26<sup>th</sup> May = School Intra House Day.

Friday 26<sup>th</sup> May = Class 1L Assembly 2.15-3pm

**Monday 29<sup>th</sup> May – Tuesday 6<sup>th</sup> June = SCHOOL CLOSED**

## NEW PE DAYS SUMMER 1ST HALF TERM

EYFS = Wednesday (RH Indoor / RL Outdoor) /  
Wednesday (RH Outdoor / RL Indoor)

YEAR 1 = Wednesday (1H Indoor / 1L Outdoor) /  
Friday (1L Indoor / 1H Outdoor)

YEAR 2 = Monday (Indoor) / Thursday (Outdoor)

YEAR 3 = Tuesday (Outdoor) 3L + 3H Swimming /  
Thursday (Indoor)

YEAR 4 = Wednesday (Indoor) / Friday (Outdoor)

YEAR 5 = Monday (Outdoor) / Thursday (Indoor)

YEAR 6 = Tuesday (Indoor) / Thursday (Outdoor)



# Diary DATES

## SUMMER 2ND HALF TERM

### SUMMER 2<sup>ND</sup> HALF TERM

**Monday 5<sup>th</sup> June-Tuesday 6<sup>th</sup> June = INSET DAY (Staff only)**

**Wednesday 7<sup>th</sup> June = SCHOOL RE-OPENS (PUPILS)**

**Monday 12<sup>th</sup> June – Friday 16<sup>th</sup> June = Year 1/2 Phonics Screening Check**

**Monday 12<sup>th</sup> June = EYFS Birchfield Gardens Mini beast hunt WB 12.6.22**

**Tuesday 13<sup>th</sup> June = Swimming Catch Up (Invited Pupils Only) 1.30-3.30pm**

**Tuesday 13<sup>th</sup> June = Year 4 Meet the Bard – Shakespeare Project**

**Wednesday 14<sup>th</sup> June = Class 2L Tatton Hall Park Trip**

**Wednesday 14<sup>th</sup> June = EYFS Music and Movement Phonics**

**Wednesday 14<sup>th</sup> June = Y1 Music and Movement Numeracy**

**Thursday 15<sup>th</sup> June = Class 2H Tatton Hall Park Trip**

**Thursday 15<sup>th</sup> June = School Nurse Parent Drop In = 2pm**

**Friday 16<sup>th</sup> June = Class RH Assembly 2.15pm-3pm**

**Friday 16<sup>th</sup> June = Secret Fathers’ Day Shop**

**Monday 19<sup>th</sup> June – Friday 23<sup>rd</sup> June – Year 4 Multiplication Tables Check**

**Tuesday 20<sup>th</sup> June = Swimming Catch Up (Invited Pupils Only) 1.30-3.30pm**

**Tuesday 20<sup>th</sup> June = Year 4 Meet the Bard – Shakespeare Project**

**Wednesday 21<sup>st</sup> June = EYFS Music and Movement Phonics**

**Wednesday 21<sup>st</sup> June = Y1 Music and Movement Numeracy**

**Monday 26<sup>th</sup> June = Parents’ Evening (JUST CLASS 2H) 3.30pm – 6pm**

**Tuesday 27<sup>th</sup> June = Swimming Catch Up (Invited Pupils Only) 1.30-3.30pm**

**Tuesday 27<sup>th</sup> June = Year 4 Meet the Bard – Shakespeare Project**

**Tuesday 27<sup>th</sup> June = Spring Term Parent Consultation Meeting 3.30pm-6.30pm EYFS to Y5 (Not Class 2H or Y6)**

**Wednesday 28<sup>th</sup> June = EYFS Music and Movement Phonics**

**Wednesday 28<sup>th</sup> June = Y1 Music and Movement Numeracy**

**Wednesday 28<sup>th</sup> June = Sports Day (KS2 am / KS1 pm)**

**Thursday 29<sup>th</sup> June = Spring Term Parent Consultation Meeting 3.30pm-6.30pm (EYFS to Y5 not Y6)**

**Friday 30<sup>th</sup> June = Class RH Assembly 2.15pm-3pm**



# Diary DATES

## SUMMER 2ND HALF TERM CONTINUED...

Monday 3<sup>rd</sup> July = Y6 High School Transition

Monday 3<sup>rd</sup> July = Whole School Transition

Monday 3<sup>rd</sup> July = NEW EYFS Teddy Bear's Picnic 1pm (Group A)

Monday 3<sup>rd</sup> July = Y1 Health and Nutrition Workshop = in school – WB 3.7.22

Tuesday 4<sup>th</sup> July = Y6 High School Transition

Tuesday 4<sup>th</sup> July = Whole School Transition

Tuesday 4<sup>th</sup> July = NEW EYFS Teddy Bear's Picnic 1pm (Group B)

Tuesday 4<sup>th</sup> July = Catch Up Swimming (Invited Children Only)

Tuesday 4<sup>th</sup> July = Year 4 Meet the Bard – Shakespeare Project

Wednesday 5<sup>th</sup> July = Year 6 High School Transition

Wednesday 5<sup>th</sup> July = EYFS Music and Movement Phonics

Wednesday 5<sup>th</sup> July = Y1 Music and Movement Numeracy

Wednesday 5<sup>th</sup> July = Town Sports Competition

Monday 10<sup>th</sup> July – Thursday 13<sup>th</sup> July = Year 6 Residential York

Friday 11<sup>th</sup> July = Y6 Play Practice = STAGE

Friday 11<sup>th</sup> July = Y6 Parents' Afternoon Appointments – Y6 SATs Results

Monday 17<sup>th</sup> July = Y6 Dress Rehearsal (for school) 9am

**Monday 17<sup>th</sup> July = EYFS / KS1 Awards 2.30pm**

Monday 17<sup>th</sup> July = Y6 Play (for parents) 6.30pm

**Tuesday 18<sup>th</sup> July = KS2 Awards (Year 3-5) = 2.30pm**

Tuesday 18<sup>th</sup> July = Y6 Play (for parents) = 6.30pm

**Wednesday 19<sup>th</sup> July = Year 6 Leavers Assembly 9.15am**

**Wednesday 19<sup>th</sup> July = SCHOOL CLOSES**

**Monday 4<sup>th</sup> September 2023 = INSET DAY (Staff Only)**

**Tuesday 5<sup>th</sup> September 2023 = SCHOOL RE-OPENS STAFF AND PUPILS**