

LUNT'S HEATH News

Friday 2nd December 2022

“Today, our year 5 children have embarked on their trip to Robinwood with a real sense of excitement! For many, this first time away from home can be both an exciting and anxious time! As a school, we ensure that all our children have the widest available opportunities to ensure that they have a maximum opportunity to succeed! We wish them all a fantastic weekend and can't wait to hear the stories on Monday!

Have a great weekend, Mr. D Paton Headteacher"

ROADWORKS UPDATE - WHO KNOWS? WEDGEWOOD DRIVE

We have now been informed that they are instead expecting to start the roadworks on **Wedgewood Drive on Monday 28th November** for the next 5 weeks. As you will have seen this didn't start and we have not heard anymore. Unfortunately, when this does start this will undoubtedly cause chaos on the roads around school.

Therefore we strongly recommend that you walk to school. To try and alleviate this the school gates will open from 8.35am so that there is a longer window for children to enter school. We will keep you informed of any changes as soon as we are informed. We thank you in advance for your support and patience!

CHRISTMAS RAFFLE TICKETS

RAFFLE TICKETS FOR THE PTFA CHRISTMAS HAMPERS MENTIONED ABOVE ARE £1 A TICKET, RAFFLE TICKETS CAN BE PURCHASED FROM THE SCHOOL GATEWAY.

YOU CAN PURCHASE AS MANY TICKETS AS YOU WISH.

ALL CHILDREN WILL BE GIVEN A FREE TICKET FOR THE CHILD'S HAMPERS.

YEAR 5/6 CHRISTMAS SERVICE

We are delighted that we can finally return to St Luke's church for our annual Christmas Services. Year 5/6 will be performing our Year 5/6 Christmas Service this year. The children will be walked to St Luke's church on the morning of Monday 12th December for their dress rehearsal just for children from the school.

2 adults per child are then invited to join them for our evening performance on **Monday 12th December at 7pm. The children should wear uniform and Christmas Jumpers unless they have a different part with a specific costume.** We kindly request, no prams in church and the **children and parents should not arrive before 6.45pm.** The church will be holding a collection during the service.

CHRISTMAS JUMPERS

Every Friday in December the children can wear a Christmas jumper with their school uniform (in place of their school jumper)

STARTING FROM FRIDAY 2ND DECEMBER.

(Y5 can wear their Christmas jumper to Robinwood if they wish).

The PTFA will be collecting items for their raffle on **FRIDAY 9TH DECEMBER** for Christmas jumper wearing. More information as to which items are requested from each year group are included in this newsletter.

CAROLS AROUND THE TREE

We are delighted that this year will see the return of our Carols Around The Tree.

Tuesday 20th December

Two tickets per child will be available for this service available from 6pm tonight - School Gateway

Year 3 + 4 = 9.15am

Year 5 + 6 = 10.15am

Year 1 + 2 = 2.15pm

FRIDAY 9TH DECEMBER CHRISTMAS RAFFLE DONATIONS

On Friday 9th December each year group will be asked to bring a different item, which will then be used to create both adult and children's hampers.

ALL YEAR GROUPS = A BOTTLE OF ALCOHOL OR NON ALCOHOLIC SOFT DRINK

OR

EYFS = CHRISTMAS SAVOURIES (E.g. Nibbles, Christmas Crisps, etc)

Y1 = BOX OF CHRISTMAS BISCUITS

Y2 = CHRISTMAS ACTIVITIES (To occupy children. E.g. Colouring book, craft activity)

Y3 = TOILETRIES (E.g. Things you could use as an emergency back up present)

Y4 = Christmas novelties (E.g. Christmas socks or hats).

Y5 = CHRISTMAS PUDDING / CHRISTMAS CAKE / MINCE PIES)

Y6 = CHRISTMAS CHOCOLATES

EYFS - A SNOWMAN AT SUNSET

The children in EYFS will be performing their Christmas Play - A Snowman at Sunset. One performance will be in the morning and one will be in the afternoon to try and accommodate as many parents as possible. Each child will receive two tickets for each performance.

Tuesday 13th December - 9.30am (2 TICKETS)

Thursday 15th December - 2pm (2 TICKETS)

Tickets for this can be booked from 6pm tonight on the Parents' Evening Booking system.

We kindly request, no prams due to limited space in the school hall. There will be a dress rehearsal but this will be watched by children at school so that siblings have seen the performance.

PARENT GOVERNOR ELECTIONS

We have a vacancy for a new parent governor on our school governing body. Further information about what this will entail and the application process will be sent in a letter next week. However in the meantime please feel free to discuss the role with Mr Paton.

Y1/2 RALPH THE REINDEER

The children in Y1/2 will be performing their Christmas Play - Ralph the Reindeer. One performance will be in the afternoon and one will be in the morning to try and accommodate as many parents as possible. Each child will receive two tickets for EITHER THE MORNING OR AFTERNOON performance.

Tuesday 13th December - 2pm (2 TICKETS)

OR

Thursday 15th December - 9.30am (2 TICKETS)

We kindly request, no prams due to limited space in the school hall.

There will be a dress rehearsal but this will be watched by children at school so that siblings have seen the performance.

YEAR 4 LOCAL AREA WALK

Year 4 will be going on a local area walk on Monday 5th December to explore our local area, linked to their Geography topic. If you are available to come and volunteer to go on this walk with your child's class then please contact the office directly.

Class 4L = 1.00pm - 1.45pm

Class 4H = 1.45pm - 2.30pm

Please make sure you have completed the Evolve consent for your child.



During every Friday in December the children are invited to replace their school jumper for a Christmas jumper to accompany their school uniform.

In return for doing this we will be asking for children to bring in donations on

Friday 9th December

for the PTA Christmas Hampers



On Friday 9th December each year group will be asked to bring a different item, which will then be used to create both adult and children's hampers.

ALL YEAR GROUPS = A BOTTLE OF ALCOHOL OR NON ALCOHOLIC SOFT DRINK



OR



EYFS = CHRISTMAS SAVOURIES (E.g. Nibbles, Christmas Crisps, etc)

Y1 = BOX OF CHRISTMAS BISCUITS

Y2 = CHRISTMAS ACTIVITIES (To occupy children. E.g. Colouring book, craft activity)

Y3 = TOILETRIES (E.g. Things you could use as an emergency back up present)

Y4 = Christmas novelties (E.g. Christmas socks or hats).

Y5 = CHRISTMAS PUDDING / CHRISTMAS CAKE / MINCE PIES)

Y6 = CHRISTMAS CHOCOLATES

RAFFLE TICKETS FOR THESE HAMPERS ARE £1 A TICKET AND CAN BE PURCHASED FROM 6PM TONIGHT VIA THE SCHOOL GATEWAY.

YOU CAN PURCHASE AS MANY TICKETS AS YOU WISH.

ALL CHILDREN WILL BE GIVEN A FREE TICKET FOR THE CHILD'S HAMPERS.



During the Autumn Half Term we asked for your help in sourcing materials for our OPAL project.

We are steaming ahead over the Christmas half term break in putting this programme in place to improve our playtime provision. As people are starting to prepare for Christmas, and many people might be sorting out attics and garages, we thought this might be the ideal time to remind you that we are looking for any donations to this project you can make.

We are looking for things like lego, gardening equipment, luggage, trolleys, prams, wheelbarrows, dressing up clothes, any old toys and games, bikes, scooters etc.

If you can donate any of the items included in the letter below to school we would really appreciate it!



**Lunt's Heath
Primary School**

T: 0151 423 3322

F: 0151 420 6977

E: sec@luntsheath.halton.sch.uk

W: luntsheathprimary.co.uk

2nd December 2022

Dear Parents and Carers,

OPAL calling...

I am writing to you about an extension of our Outdoor Play and Learning Strategy and we're looking for your help again!

If you remember back in May, we kindly had a donation of tyres, pipes and tarpaulins for the children to make dens and build things at lunch times. Now we're looking to extend the items out on the playgrounds.

If you have any of the following in the garage, shed, loft or spare room then we'll happily take it from you:

- Plastic crates or bread trays
- Small world toys – old dinosaurs, cars, Lego, building bricks etc...
- Dressing up clothes – either old costumes or any old clothes that children would enjoy dressing up in!
- Lightweight plastic pallets
- Soft toys – teddies, animals, or dolls
- Brushes – larger ones as opposed to hair
- Old cushions or large fabrics
- Old bikes that are past their sell by date

They can be dropped off at school after the half term holiday!

Whilst this is taking place, we are looking forward to our All-Weather Pitch being starting before December!

Many thanks in advance for your support as we build the alternate vision for breaktimes and lunch times!

Kind regards,

Mr. D Paton

LUNT'S HEATH

School Dinner Menu

Please find below the School Dinner Menu for the WB 5.12.22. Please remember to pay for your child's school dinner a week in advance using the school gateway system.

As it will be Turkey Christmas Dinner on 14.12.22, next week's roast dinner has been changed to Minced Beef.

Main	MEET FREE MONDAYS Tomato & Vegetable Pasta Bake Served with Garlic Bread Cheese & Rice Flan served with Herbie potatoes	Bacon Brunch Bacon, Hash Browns, Omelette Quorn Sausage Brunch Quorn Sausage, Hash Browns, Omelette	Savoury Minced Beef in Gravy served with Roast/Mash Potatoes & a Yorkshire pudding Quorn Sausage Dinner served with Roast/Mash Potatoes & Gravy	DELI DAY Selection of Deli Sandwiches, Wraps & Baguettes served with Warm pasta salad Filled Jacket Potato served with a side salad	Fillet Fish Fingers or Non-Fried Salmon Fillet served with chips Margherita Pizza served with chips
Side	Peas & Sweetcorn, Salad Bar	Baked Beans, Salad Bar	Carrots, Broccoli, Salad Bar	Salad Bar	Mushy Peas, Salad Bar
Dessert	Frank's Welsh Ice Cream tub, Cheese & Crackers, Fresh Fruit	Carrot Cake slice, Yoghurt, Fresh Fruit	Flapjack Cookie with a wedge of fruit, Yoghurt, Fresh Fruit	Vanilla sponge & custard, Cheese & Crackers, Fresh Fruit	Chocolate Orange cookie with Orange wedge, Yoghurt, Fresh Fruit

LUNCHTIME STARS

EYFS = Jaxson Campbell
 Year 1 = Ethan Escosio
 Year 2 = Mason Allen
 Year 3 = Edward Bennett
 Year 4 = Asmin Yolcu
 Year 5 = Evie Jones
 Year 6 = Alex Birchall



Christmas Dinner



WE WILL BE HAVING OUR SCHOOL CHRISTMAS LUNCH ON WEDNESDAY 14TH DECEMBER. THIS CAN BE ORDERED AS USUAL ON THE SCHOOL GATWAY SYSTEM AS YOU WOULD A USUAL SCHOOL MEAL. IF YOUR CHILD IS PACKED LUNCH THEY CAN BRING A FESTIVE PACKED LUNCH ON THIS DAY. THEY CAN WEAR A CHRISTMAS HAT OR HEADBAND FOR LUNCH.

BREAKTIME SNACKS

From Monday to Thursday children must only bring healthy snacks ie; fruit, cheese, vegetables, oat bars (No chocolate, nuts, crisps (as a snack).

On Fridays they may bring a NUT-FREE treat such as Kit Kat or bag of crisps but NOT hard-boiled sweets, chewy sweets, lollipops, sherbet, chewing gum etc.

We have been concerned this half term by the size of the snack that children are bringing into school on a Friday. These should be small/regular sized items as they will be eating their lunch soon after morning break.

Free fruit is always available for all Key Stage 1 children.

Children must only bring still, unflavoured water into school, in a standard sized sports bottle, to drink during their lesson times. Juice is fine for packed lunches.



STARS OF THE HALF TERM

HEADTEACHER AWARD

EYFS / KS1 – Eddy Wang – For trying new things at lunchtime and being proud of himself.

KS2 – James Latham – Brilliant effort in all areas of the curriculum!

KEY STAGE 1

Class	Name of child	Reason for award
RL	<i>Elsie Mellor</i> <i>Euan Hatfield</i>	<i>Curriculum – For always being your best self during carpet time!</i> <i>Enterprise - For your amazing creations in drawing club!</i>
RH	<i>Chloe Doubleday</i> <i>Oliver Price</i>	<i>Curriculum – for always demonstrating an excellent attitude towards her learning.</i> <i>Enterprise - For coming up with unique and interesting ideas during Drawing Club.</i>
1L	<i>Rosie Wycherley</i> <i>Thomas Linfield</i>	<i>Curriculum – For being enthusiastic during writing sessions and trying her best to spell new words.</i> <i>Enterprise - For sharing his ideas in class and his understanding of the learning objective.</i>
1H	<i>Darcey Darlington</i> <i>Thomas Gregson</i>	<i>Curriculum – For blowing my socks off with your super writing this week!</i> <i>Enterprise - For always being super imaginative & producing wonderful things in our creative area!</i>
2L	<i>Fraser Connor</i> <i>Lewis Jackson</i>	<i>Curriculum – For fantastic subtractions in Maths this week!</i> <i>Enterprise - For consistent hard-work and effort in everything he does right across the curriculum.</i>
2H	<i>Carter Dulson</i> <i>Rose Connolly</i>	<i>Curriculum – For working really hard to improve her handwriting and presentation, Keep up the hard work.</i> <i>Enterprise - For always contributing her ideas and understanding in group and whole class discussions.</i>

KEY STAGE 2

Class	Name of child	Reason for award
3L	<i>Cole Houghton</i> <i>Jasmine Murphy</i>	<i>Curriculum – For recognising how important that focused attitude in class can have that positive impact.</i> <i>Enterprise -For being really enterprising during her writing and creating some brilliant ideas from our previous work.</i>
3H	<i>Tilly Bloomfield</i> <i>Donovan Butler</i>	<i>Curriculum – For being a fantastic member of 3H. Tilly always gets on with her work and is great at participating in lessons!</i> <i>Enterprise - For creating an amazing book with chapters on some amazing things that he finds.</i>
4L	<i>William Oteh</i> <i>Tilly Dale</i>	<i>Curriculum – For showing a fantastic understanding when drawing and interpreting bar charts. You have activated prior knowledge when questioned and clearly explained concepts for others.</i> <i>Enterprise - For being a Crest Superstar in Science. Your bird's nest was carefully designed for stability and to withstand water and wind damage.</i>
4H	<i>Madison Booth</i> <i>Ellissa Swales</i>	<i>Curriculum – For always having pride in her work. Making sure her presentation is to a high standard and reflecting on what she can do to always improve.</i> <i>Enterprise - For listening carefully to instructions to design and build an effective bird's nest.</i>
5L	<i>George Peacock</i> <i>Grace Gregson</i>	<i>Curriculum – For never giving up on his fractions work when he found things difficult.</i> <i>Enterprise - For being creative in her History work to present her ideas.</i>
5H	<i>Isla Grady</i> <i>Sophia Melia</i>	<i>Curriculum – For displaying her work beautifully, taking care on her presentation.</i> <i>Enterprise - For wowing me this week with her ambition to learn and applying her knowledge to everything she does in different ways.</i>
6L	<i>Zachary Lewis</i> <i>Hisoka O'Brien</i>	<i>Curriculum – For showing great determination and resilience in both his maths and English and for always doing his best!</i> <i>Enterprise - For showing real maturity in school and for challenging himself even further.</i>
6H	<i>Daisy Colebrook</i> <i>Bobby O'Connor</i>	<i>Curriculum – For being a supportive friend.</i> <i>Enterprise – For making great use of materials to extend his learning further.</i>

OTIS AWARD WINNERS

Attendance: Overall this week: 94%

EYFS / KS1 winners – 1H – Miss Bruen - 96.3%

KS2 Winners – 4L – Mrs Cameron - 96.7%

EYFS Newsletter

DRESSING THE TREE

A very big thank you for joining us for our Dressing the Tree afternoon, it was brilliant to see so many relatives in school and the children had a wonderful time- the tree now looks beautiful!

We hope you enjoyed the singing, which hopefully gave you a taste of what is to come when we perform 'A Snowman at Sunset' on the 13th and 15th December. A gentle reminder that children will need to bring their costumes into school in a bag on Monday 12th December for our dress rehearsal. Please ensure that everything is named- thank you.



MATHEMATICS

In Maths we have been exploring properties of simple 2D shapes and working on recognising and naming them in varying sizes and in different orientations.

PHONICS

The children continue to impress us with their progress in phonics and are starting to apply what they know during Drawing Club and in continuous provision.

TOPIC LESSONS

During our Topic lessons, we have enjoyed exploring the traditional tale Little Red Riding Hood with our Big Question - Did Little Red Riding Hood take a wrong turn in the woods? We have enjoyed creating maps to help Red Riding Hood on her way as well as being involved in lots of role play to retell the story.

We have had a few cases where items of uniform with names in have been accidentally taken home by other children. Please could you double check all uniform to check you don't have any belonging to anyone else? We also still have a large amount of uniform without names in that has been unclaimed.

This is a very busy time of year in the run up to the Christmas holidays so if you need clarification with anything, please do not hesitate to speak to a member of the team.

THIS WEEK

EYFS - DRESS THE TREE

On Wednesday 30th November the children of EYFS and their parents were invited to participate in a craft afternoon. They sang songs and then made decorations to decorate our Christmas Tree in the hall.





COMPUTING COMPETITION

The winners of our Online Safety Competition are:

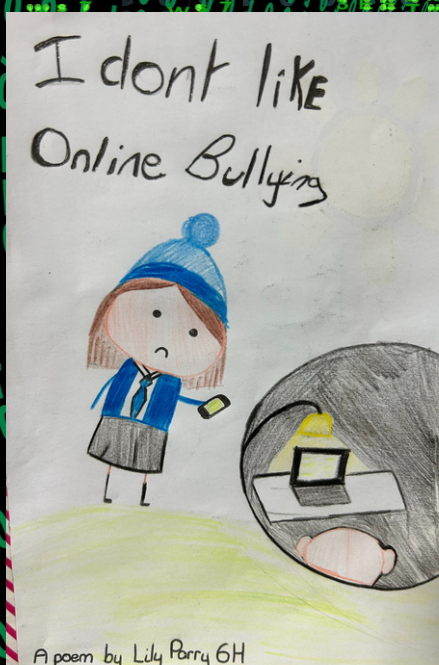
6H Lilly Parry

6L Charlotte Mines, Zoe and Sophia Doumptioti-Zacharopoulou

1H Luca McCormick

3H Elliott Hodgkinson

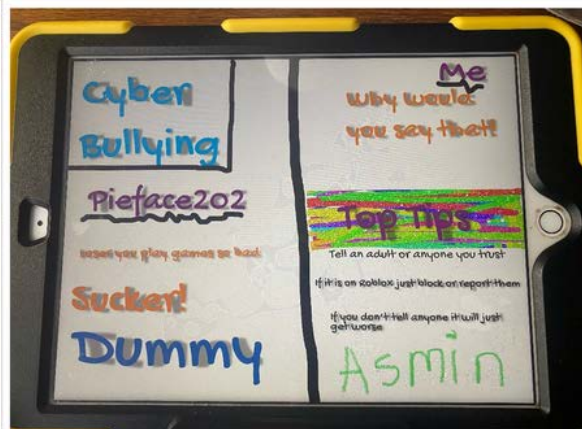
4L Daisy Steventon



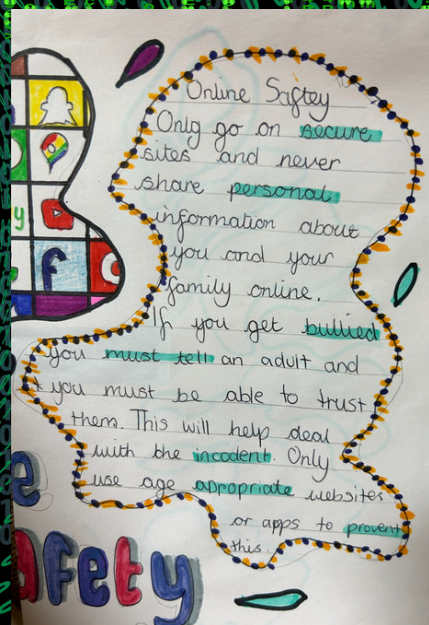
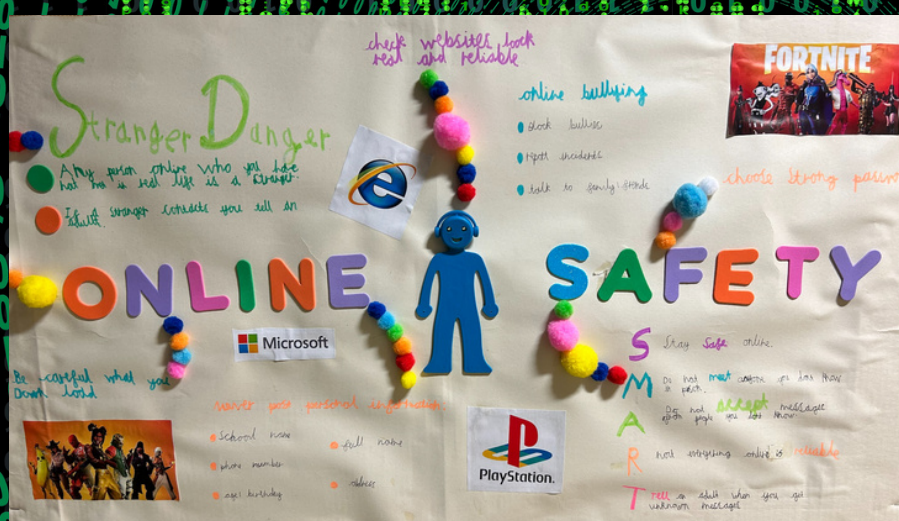
Daisy in 4L created a scratch program about Online Safety



Luca in 1H created a superhero video about Online Safety



Asmin in 4L used an iPad to create her message



THIS WEEK

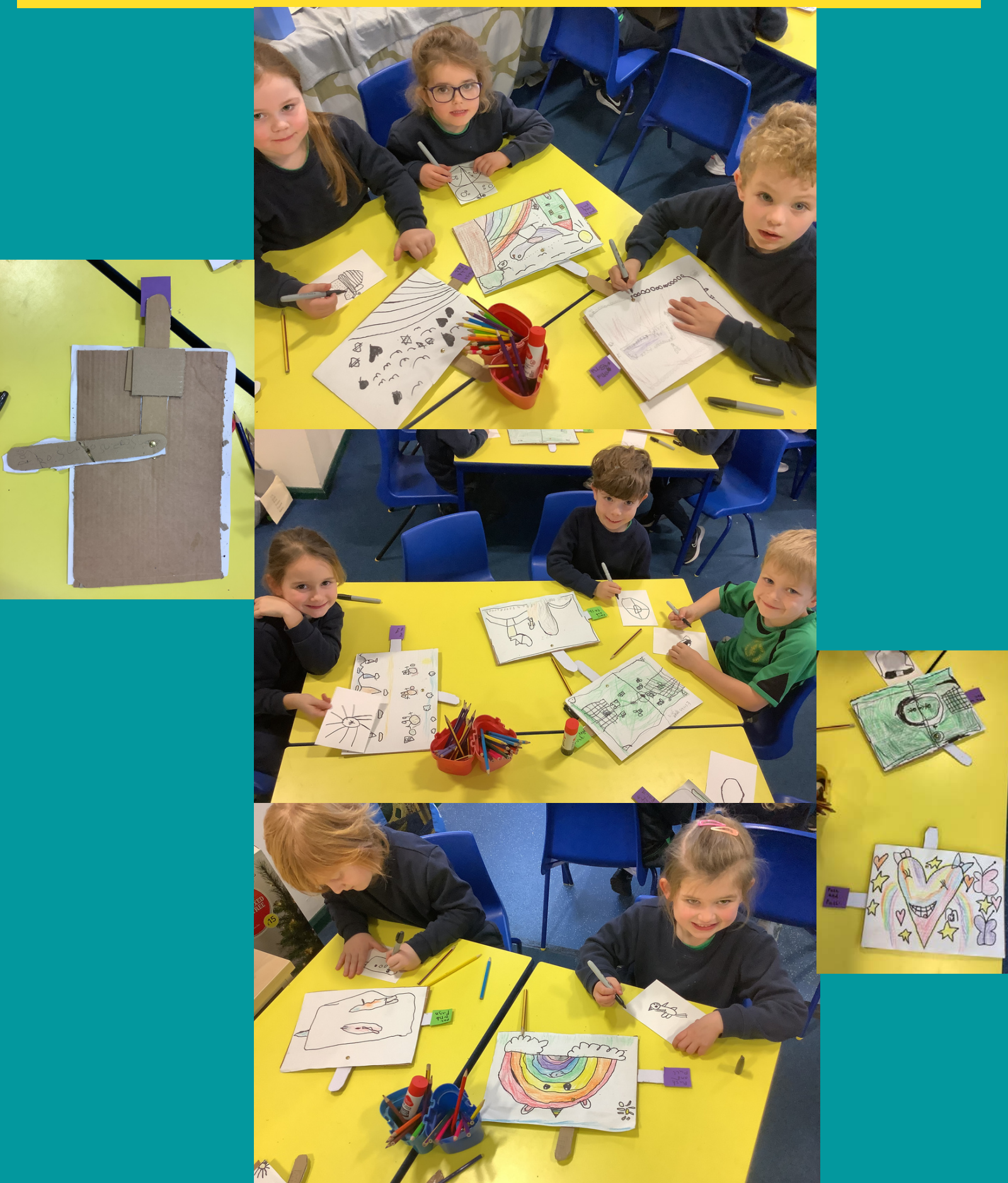
D.T ROMAN SCULPTURES - YEAR 4

In Class 4L, we have continued our D.T work with Mr Corcoran today. We have worked patiently to add mosaic and column detail to our Roman sculptures, and they are now beginning to take shape!



D.T LEVERS - YEAR 1

Year 1 have continued their D.T. work with Mr Corcoran this week making lever to move elements of their pictures like they see in pop up books.





Dear Parents,



In the run up to Christmas 2022, we are holding our next 'Great Lunt's Heath Bake Off', yet this time we ask that the children get their **FESTIVE** hats on and enjoy baking some scrumptious seasonal treats. Should your child wish to enter the competition, they should bring their creations to school on the morning of Friday 16th December (Christmas Jumper Day) to be judged by our independent panel who will select their winners as detailed further below.

We are inviting children from all class to bring in small amount of money to buy a cake in or slice of cake in the afternoon from our School Council. This will raise money for our fantastic PTA, who do so many wonderful things for our school and children.

You must follow the brief below for your bake to be considered for any of the winning titles below.

Our theme for the competition is, of course '**CHRISTMAS!**' You might choose a family tradition, Christmas films or winter scenes as your inspiration or simply choose the Christmas colours to decorate your bakes.

The Brief:

Your overall design should incorporate the colours, features and themes of Christmas.

Categories:

1. Celebration Cakes
2. Cupcakes
3. Biscuits

Winners: One winner from each category below:

1. EYFS Winner
2. KS1 Winner
3. KS2 Winner
4. Overall 'Lunt's Heath Star Baker 2022'



Will you be one of our 'Star Bakers' this year?

Entrants will need to bring the form below with them and will be allocated a number for judging. Judging will take place throughout the morning with winners announced in school assembly Monday 19th December

If you have any questions please contact Miss Cameron via the school office.

Kind regards

Miss Cameron



THE GREAT LUNT'S HEATH **FESTIVE** BAKE OFF 2022 – ENTRY FORM

Category: _____

Name: _____ Class: _____

I agree to my entry being sold by the School Council after judging Y / N



MULTIPLICATION CHAMPION



TOP CLASS = CLASS 3H
TOP MATHEMATICIAN =
WILL PRICE 3L

Multiplication Challenge

Children in Year 4 need to complete a Multiplication Tables Check during the Summer 2nd Half Term.

Multiplication facts are needed in virtually all other areas of Mathematics therefore the more confidently children can recall these facts the easier they will find their Mathematics lessons as a barrier to learning is removed.

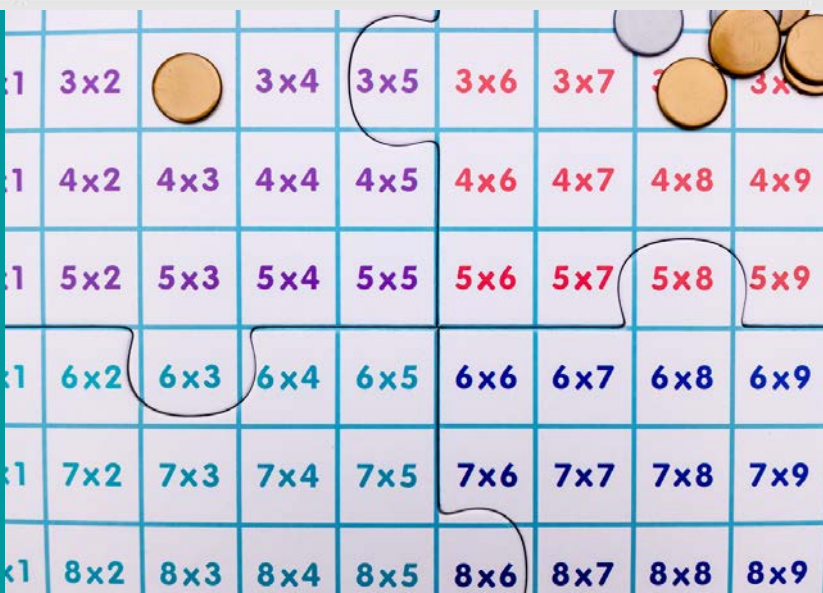
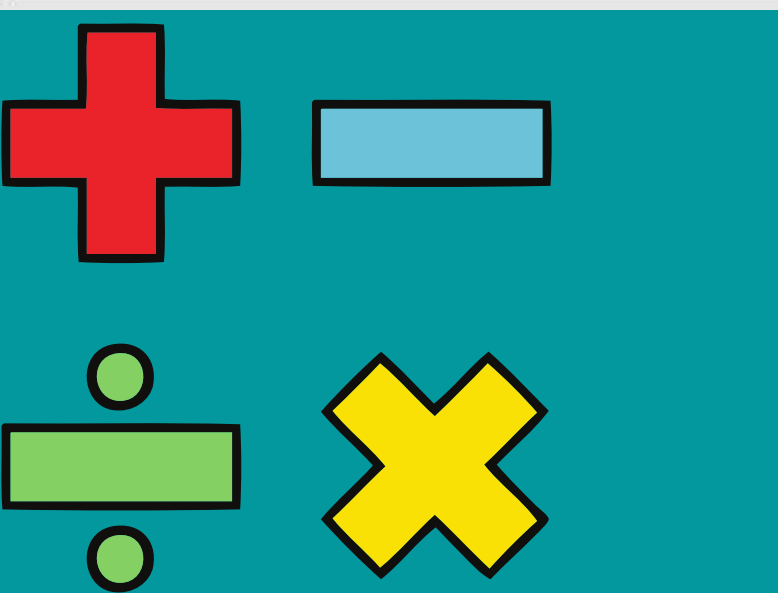
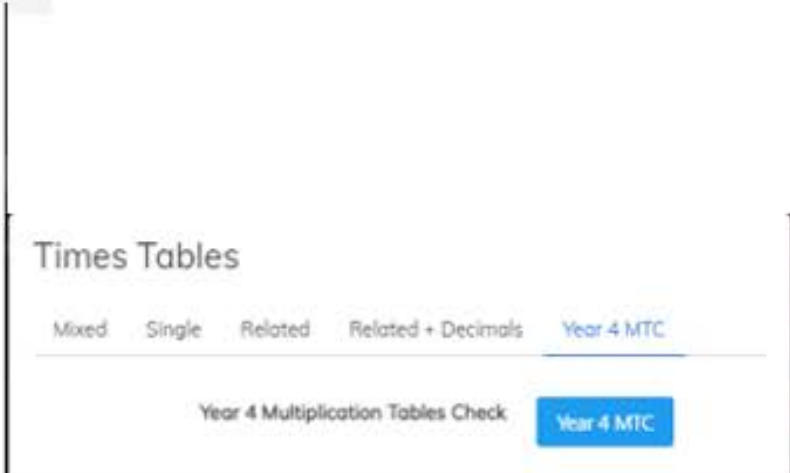
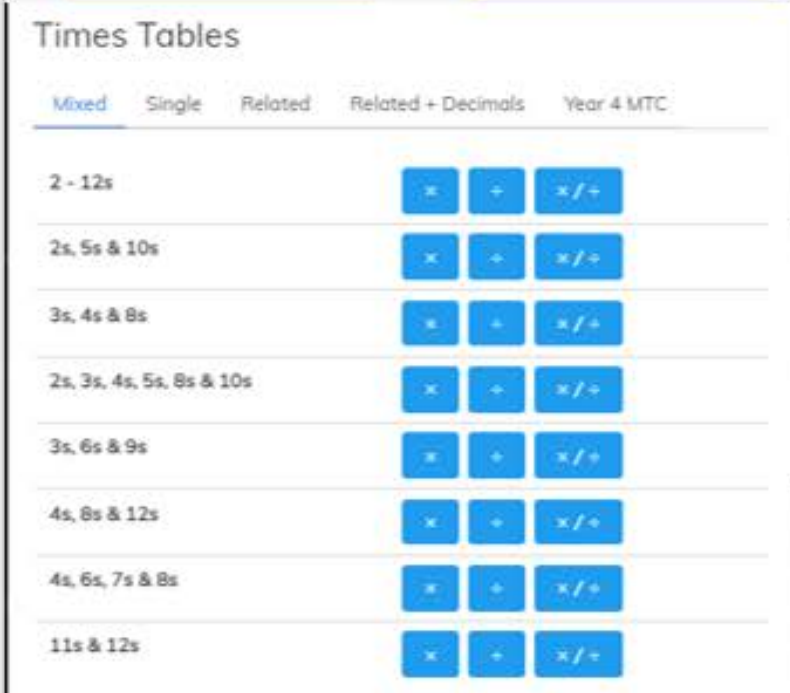
TO SUPPORT YEAR 4 IN THEIR QUEST TO RAPIDLY RECALL THEIR MULTIPLICATION FACTS WE WILL BE HOLDING A KS2 MULTIPLICATION CHALLENGE OVER THE NEXT THREE WEEKS.

PLEASE ENCOURAGE YOUR CHILD TO USE MATHS SHED ON A NIGHTLY BASIS TO PRACTICE THEIR MULTIPLICATION TABLES.

This can be found on Maths Shed. Click on Times Tables – your child can practice specific times tables that they do not know or attempt to improve their rapid recall by selecting Y4 MTC.

ON A FRIDAY WE WILL HAVE AN INDIVIDUAL WINNER FROM EACH CLASS FOR THE CHILD THAT HAS THE HIGHEST MATHS SHED SCORE AND A KS2 CLASS WINNER.

WE ARE SEARCHING FOR OUR KS2 MULTIPLICATION CHAMPION FOR KS2!



TOP CLASS = CLASS 3H
TOP SPELLER =
EMMA HAINES 3H

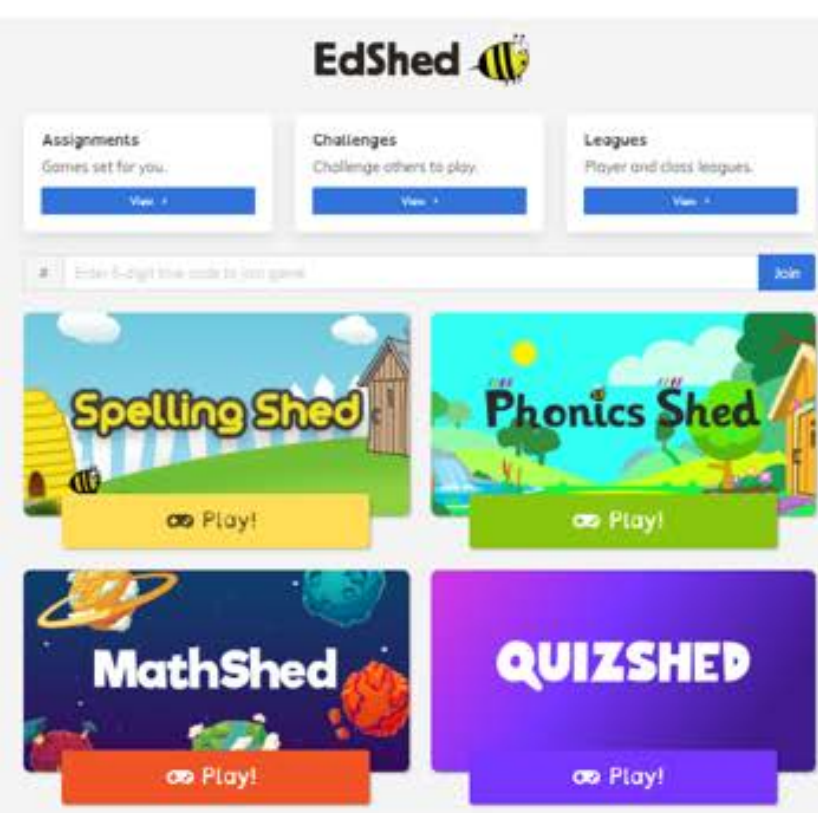
Spelling and Phonics Shed

Just a reminder that the Lunt's Heath PTA have funded a subscription for every child to not only Maths Shed but the platform which also includes Spelling and Phonics Shed.

During lockdown we have found that the children's spelling ability was greatly impacted as it was difficult to teach and test spellings virtually.

Spelling shed allows the children to practice their spellings for their age phase in a fun and interactive way through games.

Encourage your child to log into their account, select Spelling Shed or Phonics Shed. Choose their age phase and then they can choose the game type and level of challenge.



PARENT SUPPORT

We as a school are conscious that currently times are hard for everyone. We would like to do all we can to support our families. Please do not hesitate to contact the school if there is anything we can do to support you. Alternatively, you can visit:

<https://www3.halton.gov.uk/Pages/health/costofliving.aspx>

for further information. Please see below for online courses that are being offered to parents of children who are fussy eaters, struggle sleeping or are concerned about their child's screen time. These are all issues that we know impact our families. You are not alone - please seek advice and support!

Cost of living information and support

Many of us are concerned with the rising cost of living and the links below will guide you to support and services that are available in Halton to help you.

Food

Heating & Energy(Gas/Electricity)

Water

Housing

Crisis/emergency help

Help with money worries and mental health

Places of warmth (events, workshops, activities & more)

HALTON HEALTH IMPROVEMENT

Fit 4 Life Bite Size Sessions



START WELL

Join us for our 1-hour parent/carers workshops:

SLEEP & SCREENS

Did your children sleep well last night? In this session we will explore how the length and quality of sleep can affect us and our children. Pick up new tips and ideas to promote good quality, restful sleep. We will also look at how screens affect our children, and share ideas for managing screen time better.

FUSSY EATING & SNACKING

Is your child a fussy eater? It's easier said than done to get children to try new foods. In this session we will share tips and techniques to encourage your child to eat more variety. We will also talk through the steps to food acceptance. We'll share healthy snack ideas as we look at alternatives to sugary snack favourites.

MENTAL HEALTH & EMOTIONAL WELLBEING

Everyone has mental health and looking after your child's mental health has never been so important. This workshop is based on the 5 ways to wellbeing and will give you tips and advice for supporting your child's mental health. We'll share resources and techniques to promote positive mental health and build resilience.

These workshops are for parents and carers. **Choose from the following sessions:**

Online sessions via Microsoft Teams

Mental Health & Emotional Wellbeing		Fussy Eating & Snacks		Sleep & Screens	
		Wednesday 19 th October	1pm		
Tuesday 8 th November	10am	Thursday 17 th November	6 pm	Tuesday 22 nd November	6 pm
Tuesday 6 th December	6pm	Friday 16 th December	10am	Monday 5 th December	1pm

Warrington Road Children's centre sessions

Thursday 20 th October	10am	Thursday 3 rd November	10am	Thursday 10 th November	10am
-----------------------------------	------	-----------------------------------	------	------------------------------------	------

To book your place please visit

<https://halton.me/parent-carer-bitesize-sessions-booking-form/>

Or email HIT@halton.gov.uk

For more information call the team on:

0300 029 0029

or visit www.haltonhealthimprovement.co.uk



@HaltonBC



Halton BC



Diary

DATES

AUTUMN 2ND HALF TERM

DATES

AUTUMN 2ND HALF TERM

Monday 21st November – Class 4H Swimming

Monday 21st November - England World Cup Football Match = Packed lunch required.

Wednesday 23rd November – Year 6 Forest School Group (pm)

Thursday 24th November – Year 2 Outdoor Learning

Friday 25th November – Class 5L Assembly 2.15pm-3pm

Monday 28th November – Class 4H Swimming

Tuesday 29th November – Year 3/4 Dress Rehearsal St Luke's Church

Tuesday 29th November – Year 3/4 Advent Service St Luke's Church 7pm

Wednesday 30th November – EYFS Dress the Tree 2pm – 3pm

Friday 2nd December – Sunday 4th December = Year 5 Robinwood Residential

Friday 2nd December – Christmas Jumper Day

Monday 5th December – Class 4H Swimming

Monday 5th December – Year 4 Local Area Walk Trip

Friday 9th December – Christmas Jumper Day

Friday 9th December = PTA Christmas Raffle Collection

Monday 12th December – Class 4H Swimming

Monday 12th December – Year 5/6 Christmas Dress Rehearsal St Luke's Church

Monday 12th December – Year 5/6 Christmas Performance St Luke's Church 7pm

Tuesday 13th December – EYFS Christmas Performance 9.15am

Tuesday 13th December – Year 1/2 Christmas Performance 2.00pm

Wednesday 14th December – Christmas Dinner Day

Thursday 15th December - Year 1/2 Christmas Performance 9.15am

Thursday 15th December - EYFS Christmas Performance 2pm

Friday 16th December – Christmas Jumper Day

Friday 16th December – School HOUSE Values Day

Monday 19th December – Pantomime and Party Day

Tuesday 20th December – Carols around the tree

Wednesday 21st December – SCHOOL CLOSED - INSET DAY (Staff Only)

Wednesday 21st December – Tuesday 3rd January – SCHOOL CLOSED

